

ATLAS PAR CONSTELLATIONS

OPIUCHUS OPHIUCHUS

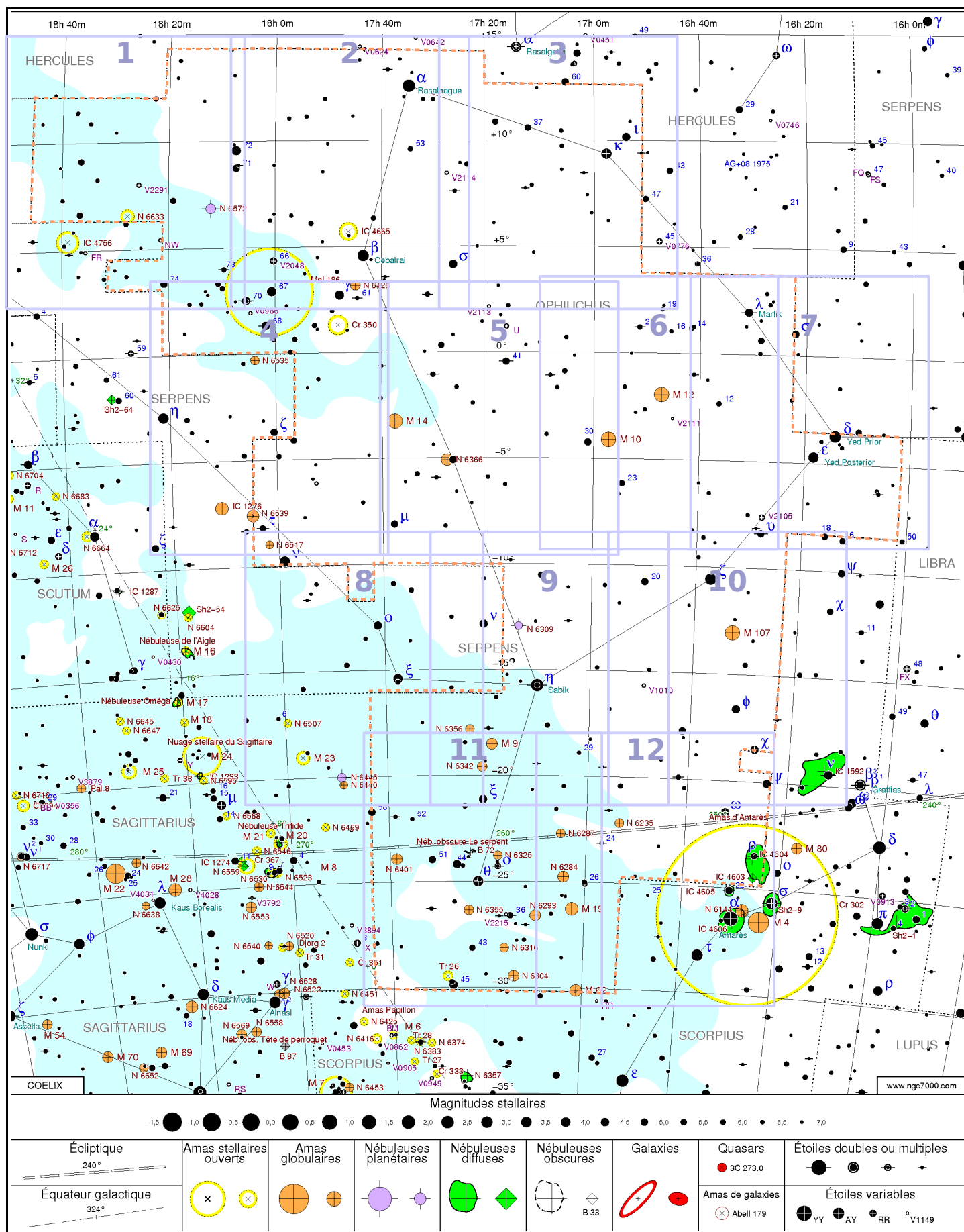


Crédit

Cartographie [Coelix Apex](#)
Mise en page [OpenOffice 2.3](#)
Illustration [Uranographia](#) de Johannes Hevelius (Edition posthume 1690)

Auteur

Marceau GUIHARD (marceau.guihard at wanadoo.fr)
Version du 09/12/2007

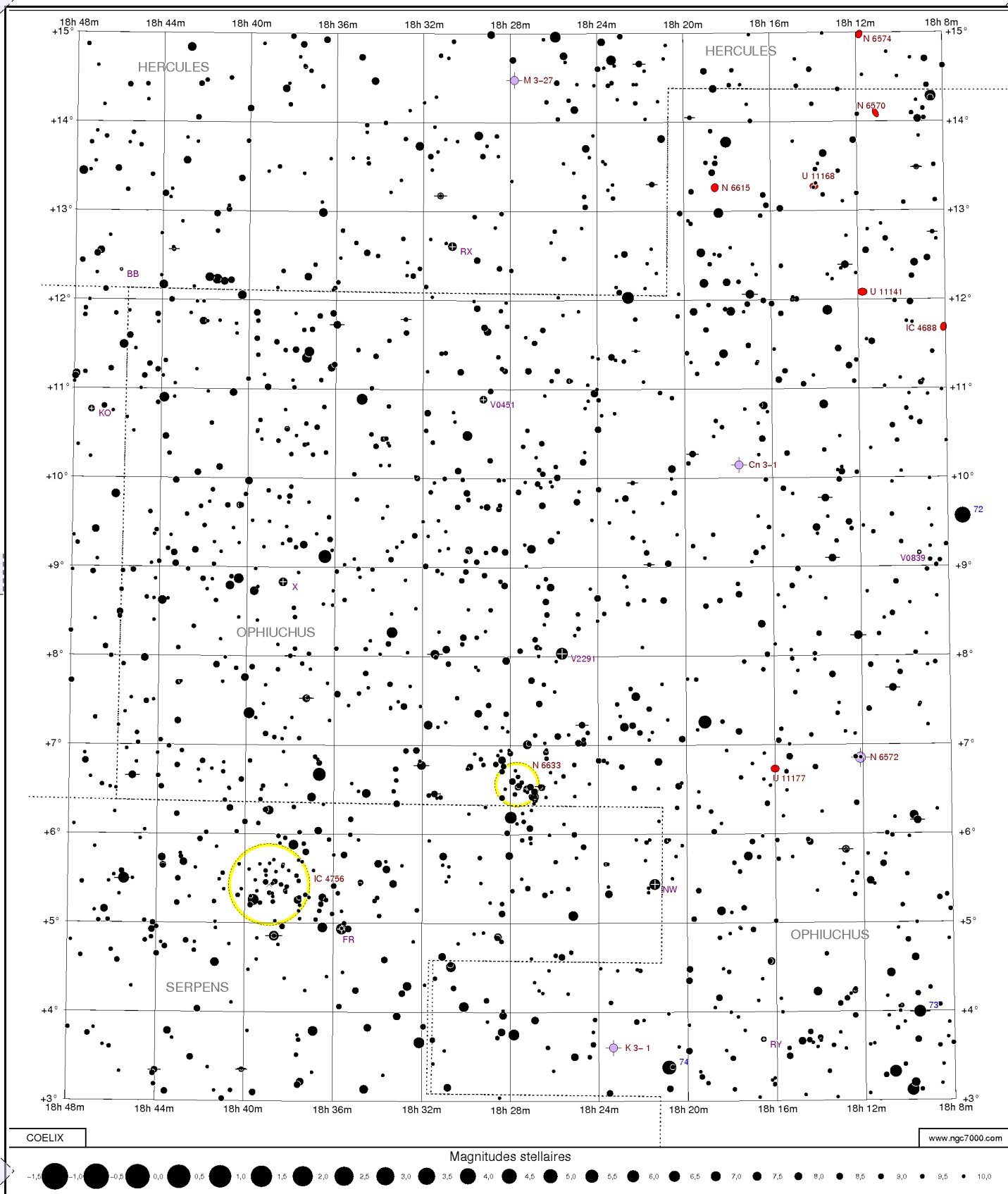


Epoque : 2000

40° x 48°

Ref :

N° 1

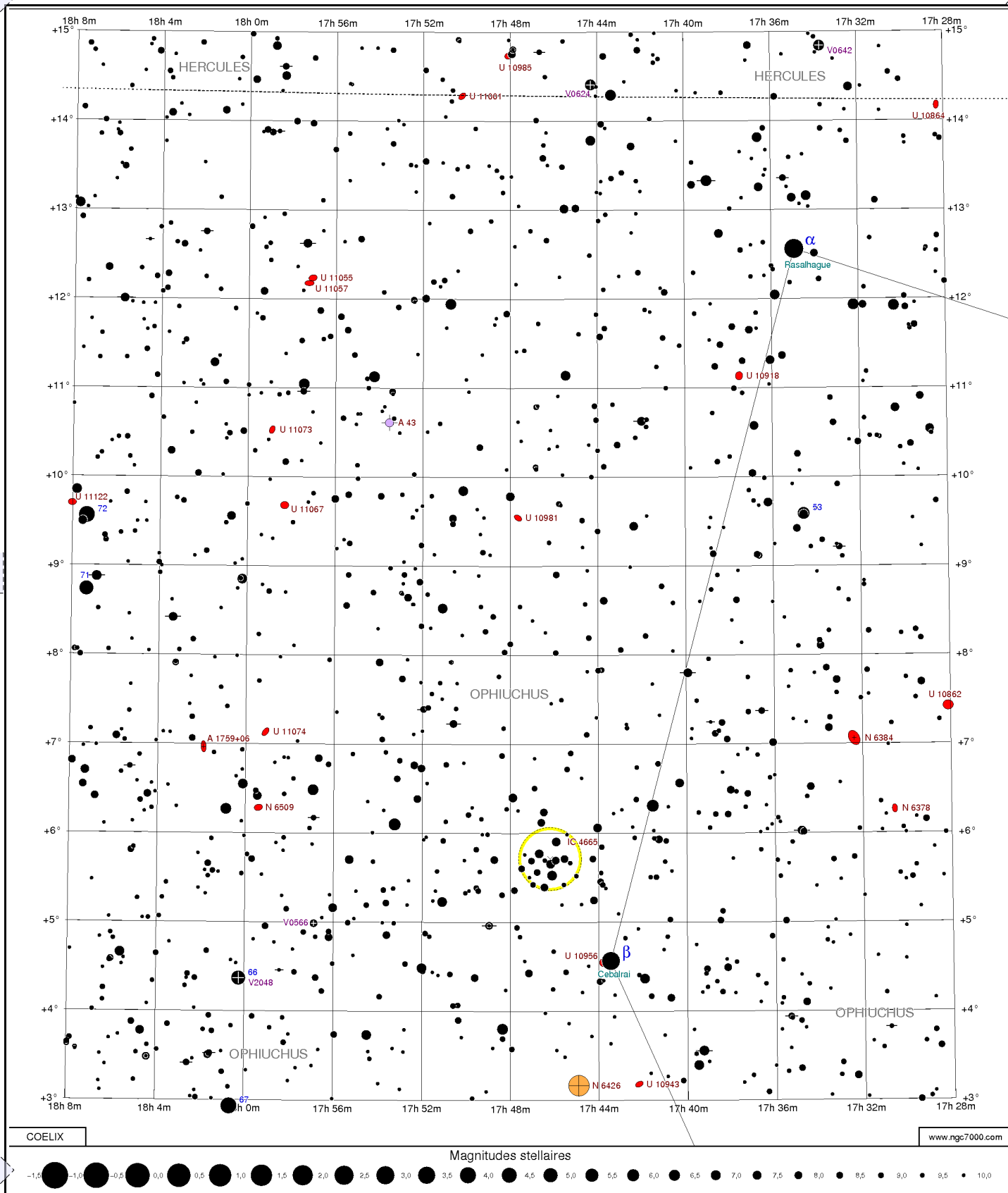


Epoque : 2000

10° x 12°

Ref : OPH4x01D09A18h28

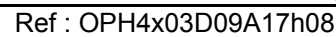
N° 2



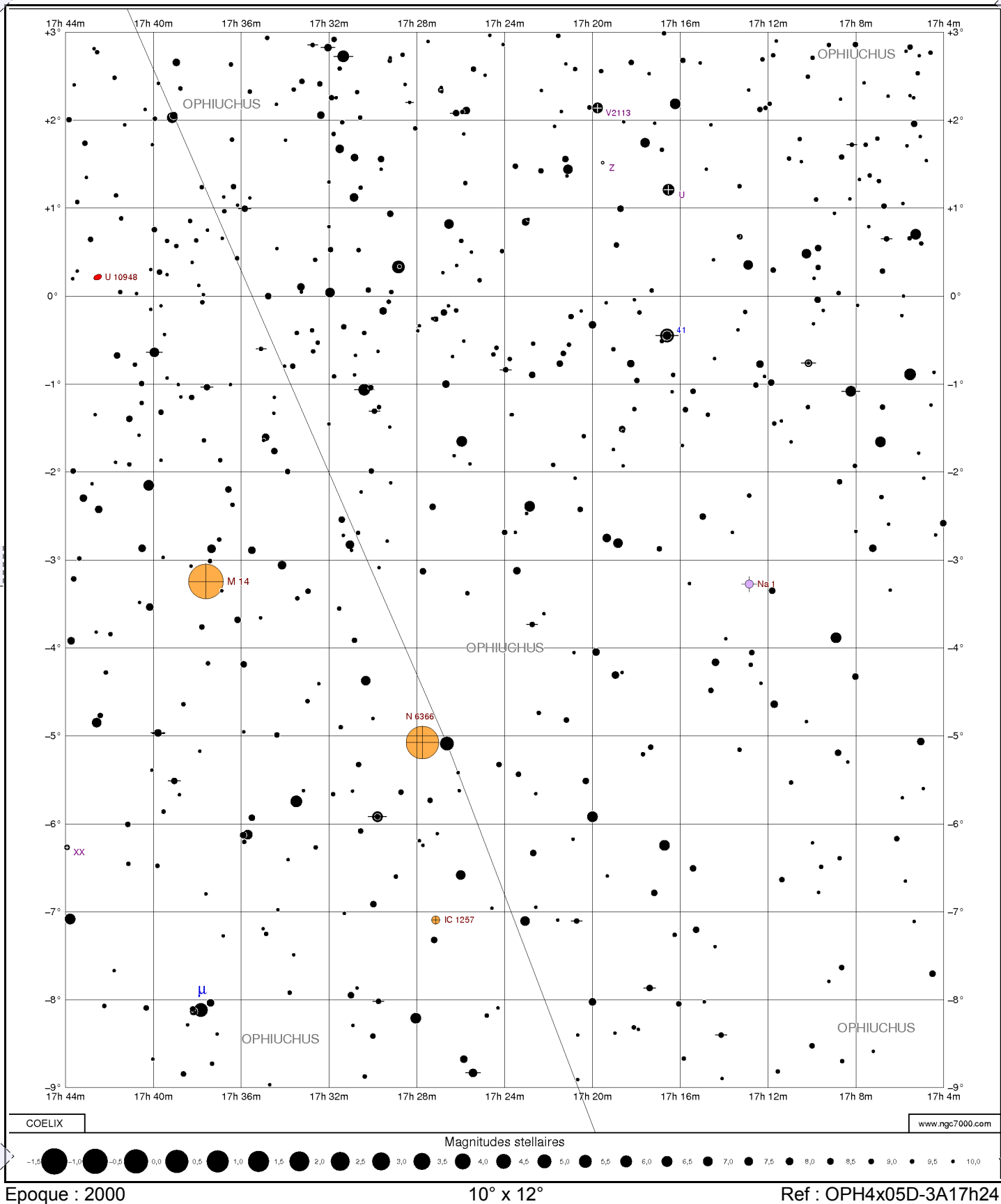
Epoque : 2000

10° x 12°

Ref : OPH4x02D09A17h48



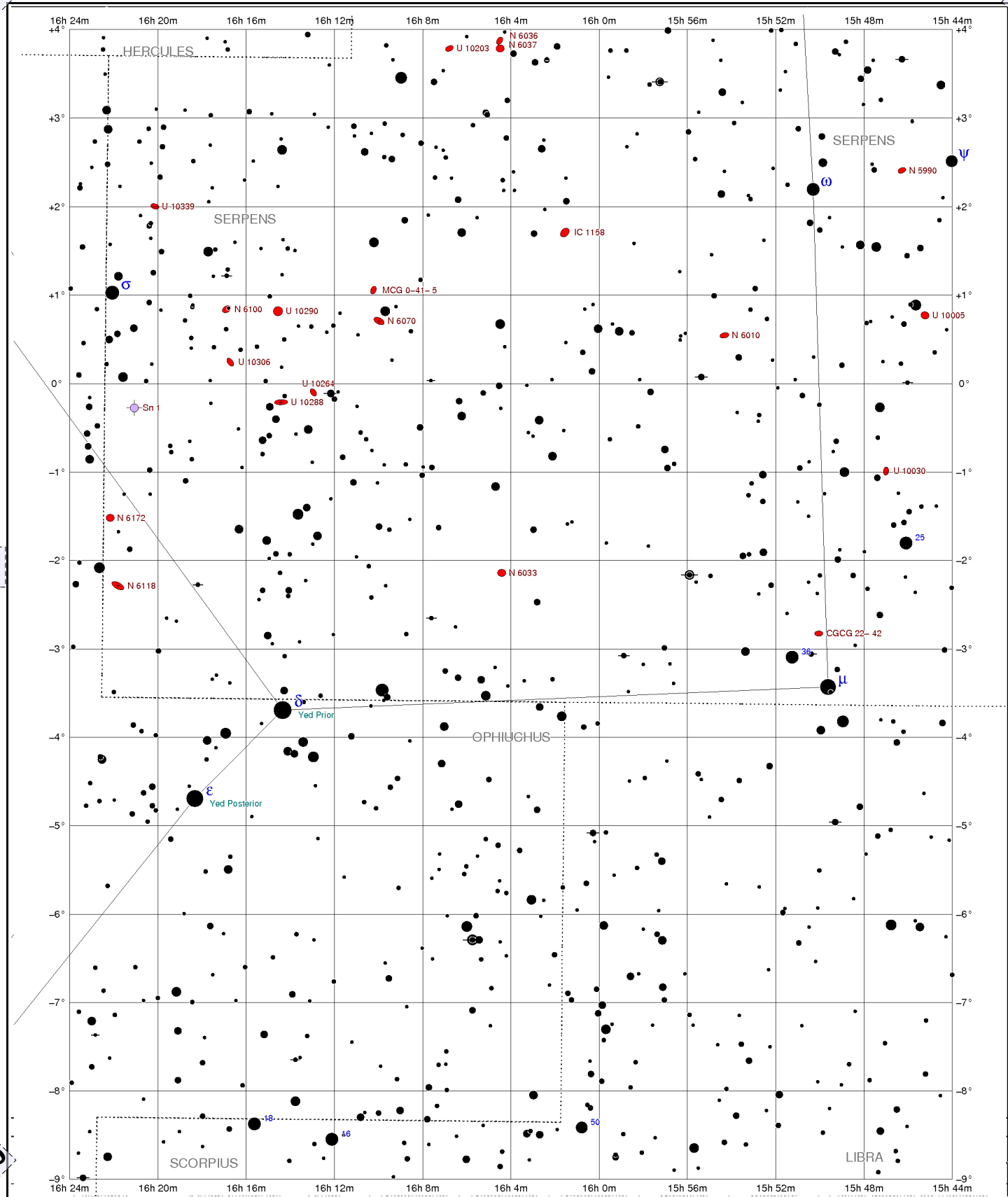
N° 5



This figure is a detailed astronomical map of the Ophiuchus constellation, showing stars of various magnitudes and colors. The map is overlaid with a grid of right ascension (RA) and declination (Dec) coordinates. The RA axis at the top ranges from 17h 4m to 16h 24m, and the Dec axis on the right ranges from +4° to -9°. The constellation Ophiuchus is labeled in several locations. Key stars are labeled with names and identifiers: U 10640, U 10623, Pal 15, U 10578, M 10, M 12, N 6220, U 10554, U 10492, U 10441, U 10394, U 10406, CGCG 52-15, A 1634+01, V0502, V2111, V2105, V1054, V1052, V1051, V1050, V1049, V1048, V1047, V1046, V1045, V1044, V1043, V1042, V1041, V1040, V1039, V1038, V1037, V1036, V1035, V1034, V1033, V1032, V1031, V1030, V1029, V1028, V1027, V1026, V1025, V1024, V1023, V1022, V1021, V1020, V1019, V1018, V1017, V1016, V1015, V1014, V1013, V1012, V1011, V1010, V1009, V1008, V1007, V1006, V1005, V1004, V1003, V1002, V1001, V1000, V999, V998, V997, V996, V995, V994, V993, V992, V991, V990, V989, V988, V987, V986, V985, V984, V983, V982, V981, V980, V979, V978, V977, V976, V975, V974, V973, V972, V971, V970, V969, V968, V967, V966, V965, V964, V963, V962, V961, V960, V959, V958, V957, V956, V955, V954, V953, V952, V951, V950, V949, V948, V947, V946, V945, V944, V943, V942, V941, V940, V939, V938, V937, V936, V935, V934, V933, V932, V931, V930, V929, V928, V927, V926, V925, V924, V923, V922, V921, V920, V919, V918, V917, V916, V915, V914, V913, V912, V911, V910, V909, V908, V907, V906, V905, V904, V903, V902, V901, V900, V899, V898, V897, V896, V895, V894, V893, V892, V891, V890, V889, V888, V887, V886, V885, V884, V883, V882, V881, V880, V879, V878, V877, V876, V875, V874, V873, V872, V871, V870, V869, V868, V867, V866, V865, V864, V863, V862, V861, V860, V859, V858, V857, V856, V855, V854, V853, V852, V851, V850, V849, V848, V847, V846, V845, V844, V843, V842, V841, V840, V839, V838, V837, V836, V835, V834, V833, V832, V831, V830, V829, V828, V827, V826, V825, V824, V823, V822, V821, V820, V819, V818, V817, V816, V815, V814, V813, V812, V811, V810, V809, V808, V807, V806, V805, V804, V803, V802, V801, V800, V799, V798, V797, V796, V795, V794, V793, V792, V791, V790, V789, V788, V787, V786, V785, V784, V783, V782, V781, V780, V779, V778, V777, V776, V775, V774, V773, V772, V771, V770, V769, V768, V767, V766, V765, V764, V763, V762, V761, V760, V759, V758, V757, V756, V755, V754, V753, V752, V751, V750, V749, V748, V747, V746, V745, V744, V743, V742, V741, V740, V739, V738, V737, V736, V735, V734, V733, V732, V731, V730, V729, V728, V727, V726, V725, V724, V723, V722, V721, V720, V719, V718, V717, V716, V715, V714, V713, V712, V711, V710, V709, V708, V707, V706, V705, V704, V703, V702, V701, V700, V699, V698, V697, V696, V695, V694, V693, V692, V691, V690, V689, V688, V687, V686, V685, V684, V683, V682, V681, V680, V679, V678, V677, V676, V675, V674, V673, V672, V671, V670, V669, V668, V667, V666, V665, V664, V663, V662, V661, V660, V659, V658, V657, V656, V655, V654, V653, V652, V651, V650, V649, V648, V647, V646, V645, V644, V643, V642, V641, V640, V639, V638, V637, V636, V635, V634, V633, V632, V631, V630, V629, V628, V627, V626, V625, V624, V623, V622, V621, V620, V619, V618, V617, V616, V615, V614, V613, V612, V611, V610, V609, V608, V607, V606, V605, V604, V603, V602, V601, V600, V599, V598, V597, V596, V595, V594, V593, V592, V591, V590, V589, V588, V587, V586, V585, V584, V583, V582, V581, V580, V579, V578, V577, V576, V575, V574, V573, V572, V571, V570, V569, V568, V567, V566, V565, V564, V563, V562, V561, V560, V559, V558, V557, V556, V555, V554, V553, V552, V551, V550, V549, V548, V547, V546, V545, V544, V543, V542, V541, V540, V539, V538, V537, V536, V535, V534, V533, V532, V531, V530, V529, V528, V527, V526, V525, V524, V523, V522, V521, V520, V519, V518, V517, V516, V515, V514, V513, V512, V511, V510, V509, V508, V507, V506, V505, V504, V503, V502, V501, V500, V499, V498, V497, V496, V495, V494, V493, V492, V491, V490, V489, V488, V487, V486, V485, V484, V483, V482, V481, V480, V479, V478, V477, V476, V475, V474, V473, V472, V471, V470, V469, V468, V467, V466, V465, V464, V463, V462, V461, V460, V459, V458, V457, V456, V455, V454, V453, V452, V451, V450, V449, V448, V447, V446, V445, V444, V443, V442, V441, V440, V439, V438, V437, V436, V435, V434, V433, V432, V431, V430, V429, V428, V427, V426, V425, V424, V423, V422, V421, V420, V419, V418, V417, V416, V415, V414, V413, V412, V411, V410, V409, V408, V407, V406, V405, V404, V403, V402, V401, V400, V399, V398, V397, V396, V395, V394, V393, V392, V391, V390, V389, V388, V387, V386, V385, V384, V383, V382, V381, V380, V379, V378, V377, V376, V375, V374, V373, V372, V371, V370, V369, V368, V367, V366, V365, V364, V363, V362, V361, V360, V359, V358, V357, V356, V355, V354, V353, V352, V351, V350, V349, V348, V347, V346, V345, V344, V343, V342, V341, V340, V339, V338, V337, V336, V335, V334, V333, V332, V331, V330, V329, V328, V327, V326, V325, V324, V323, V322, V321, V320, V319, V318, V317, V316, V315, V314, V313, V312, V311, V310, V309, V308, V307, V306, V305, V304, V303, V302, V301, V300, V29

Ref : OPH4x06D-3A16h44

N° 7

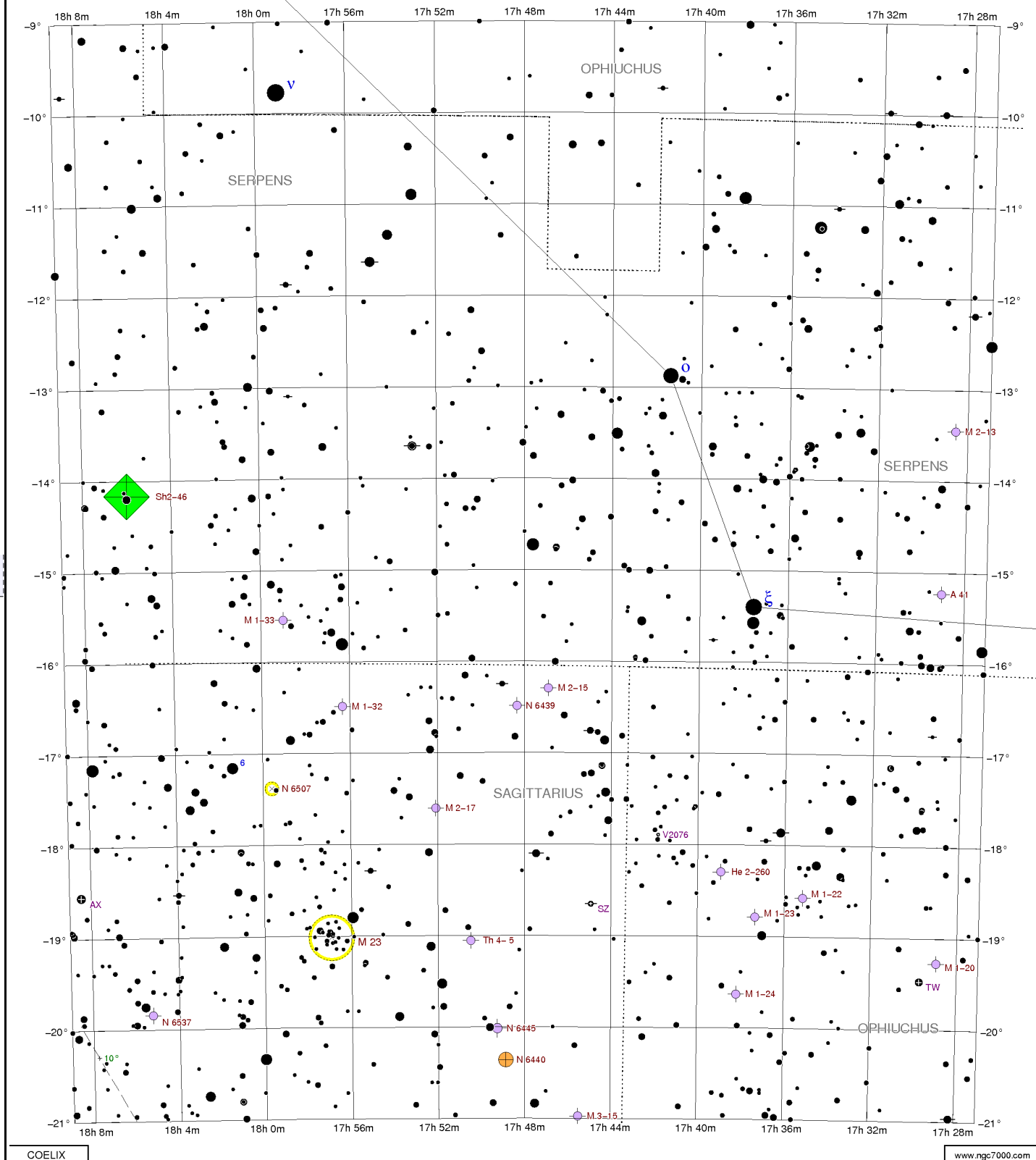


Epoque : 2000

10° x 12°

Ref : OPH4x07D-3A16h04

N° 8



COELIX

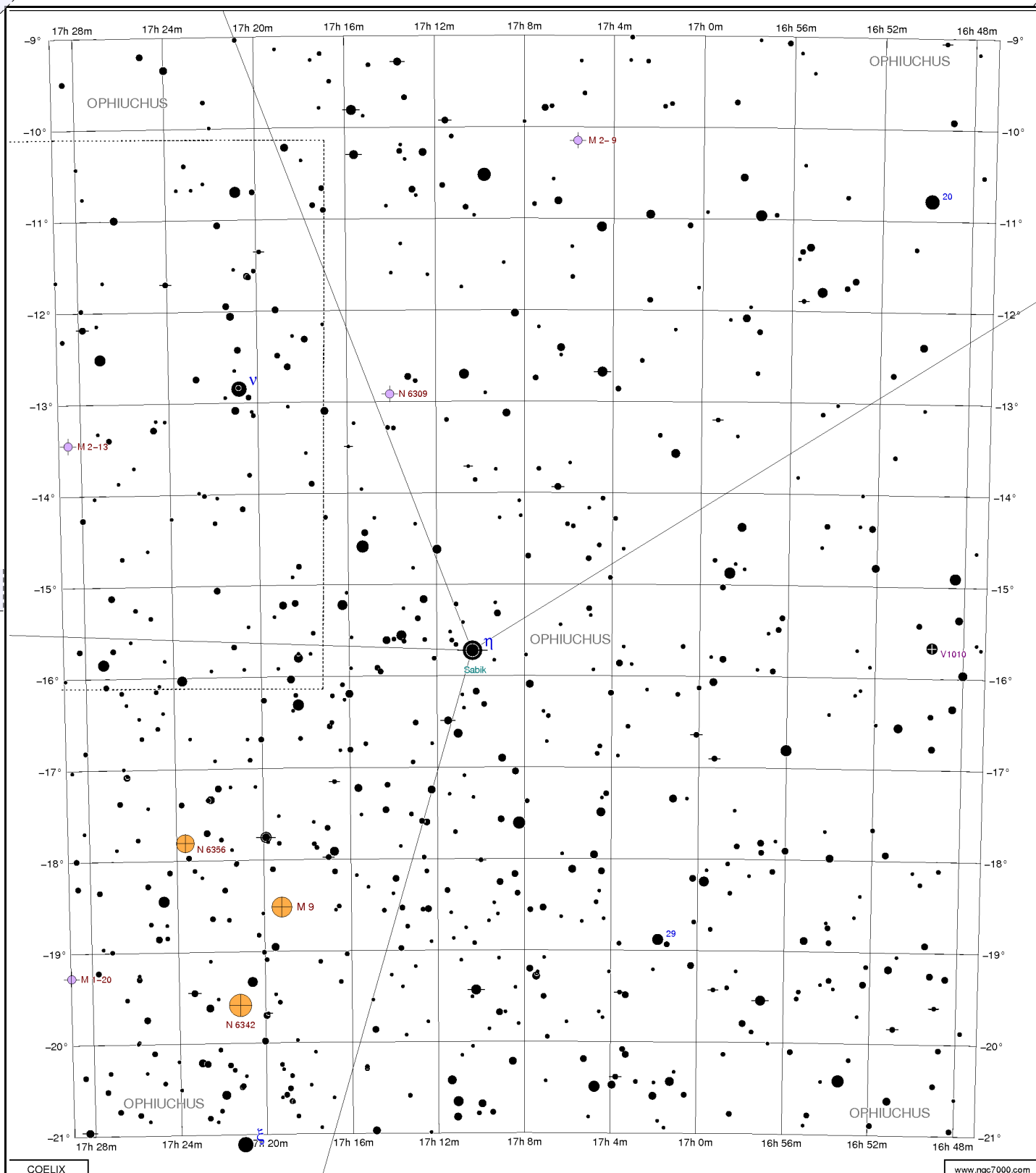
www.ngc7000.com

Epoque : 2000

10° x 12°

Ref : OPH4x08D-15A17h48

N° 9

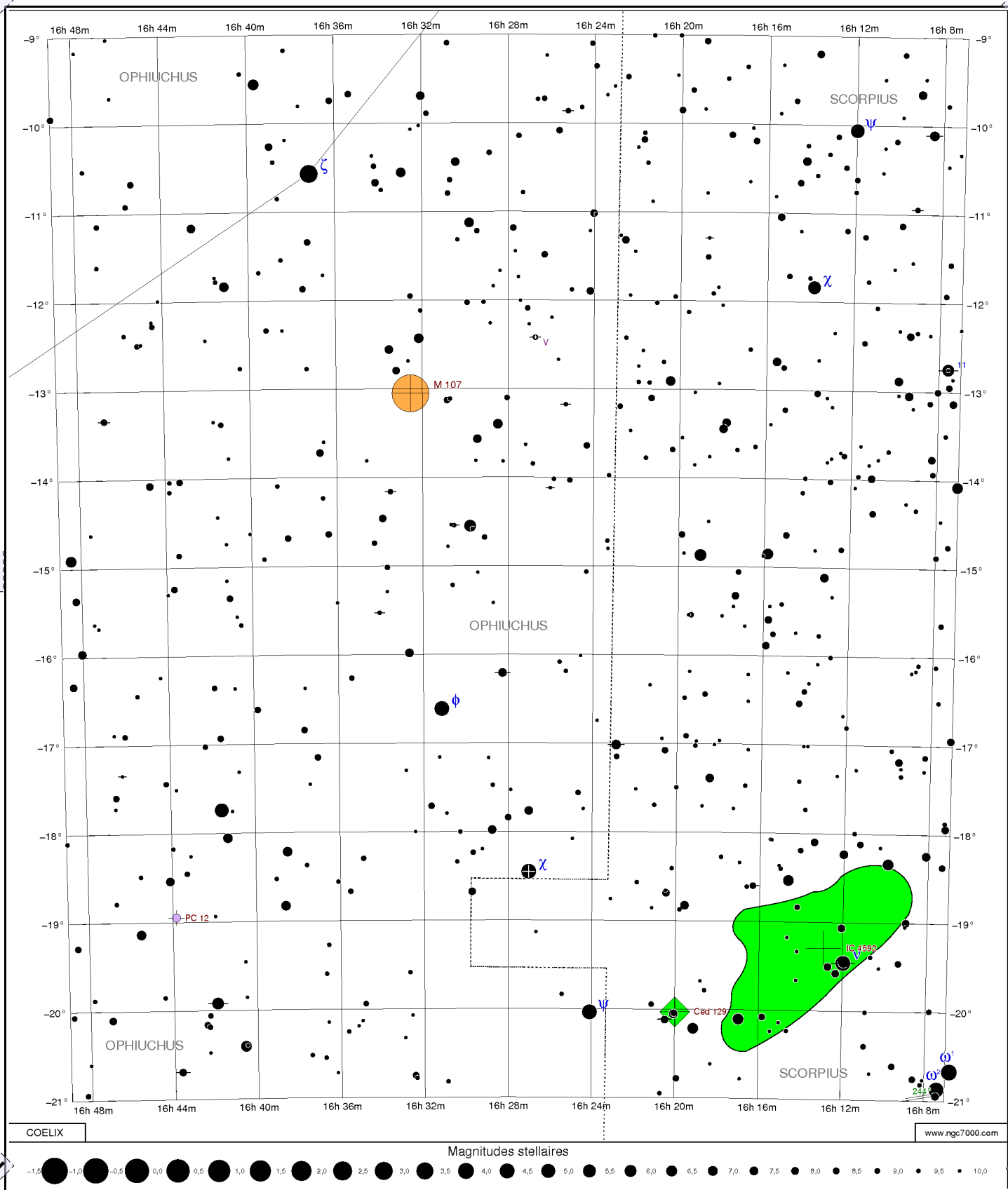


Epoque : 2000

10° x 12°

Ref : OPH4x09D-15A17h08

N° 10

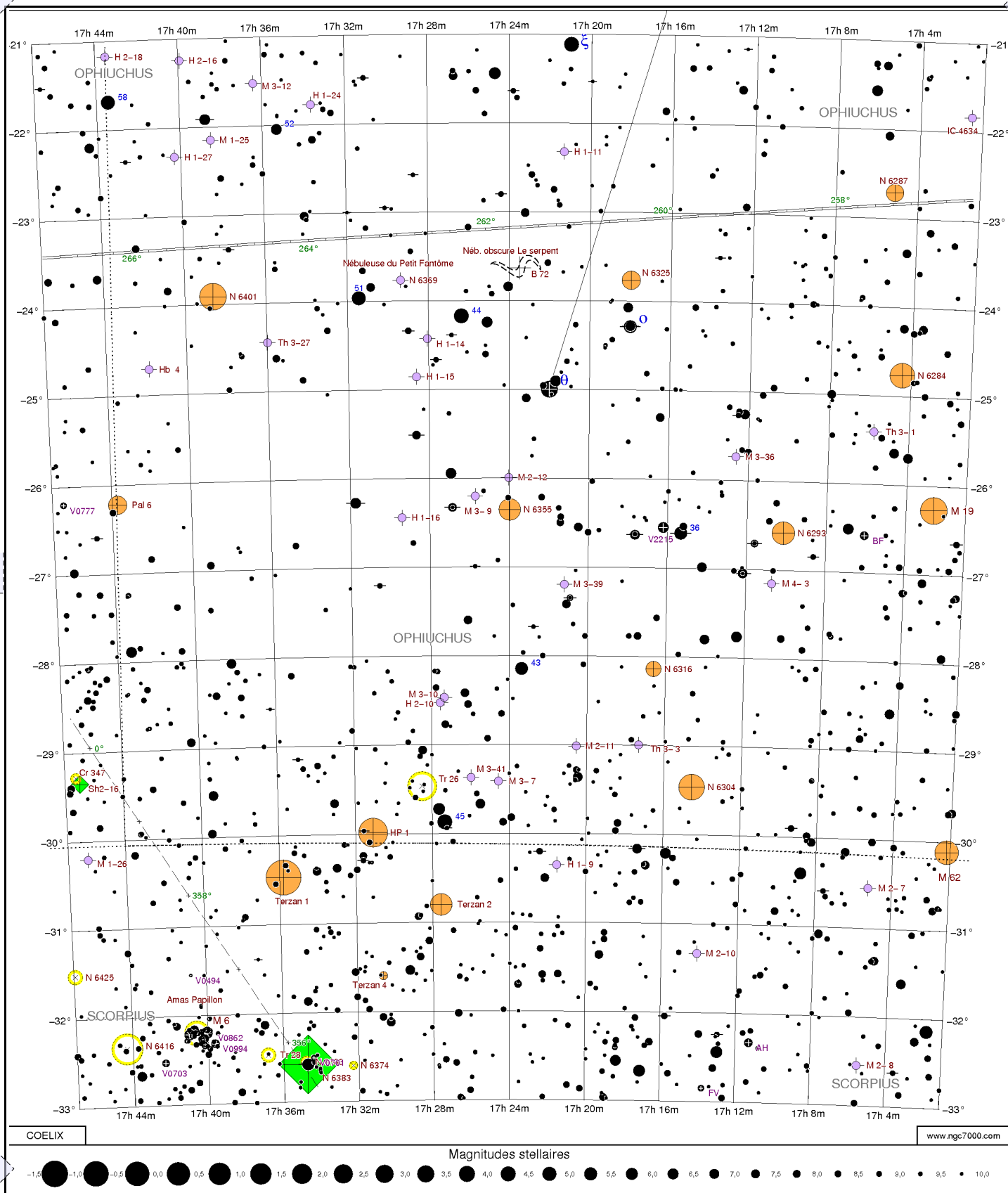


Epoque : 2000

10° x 12°

Ref : OPH4x10D-15A16h28

N° 11

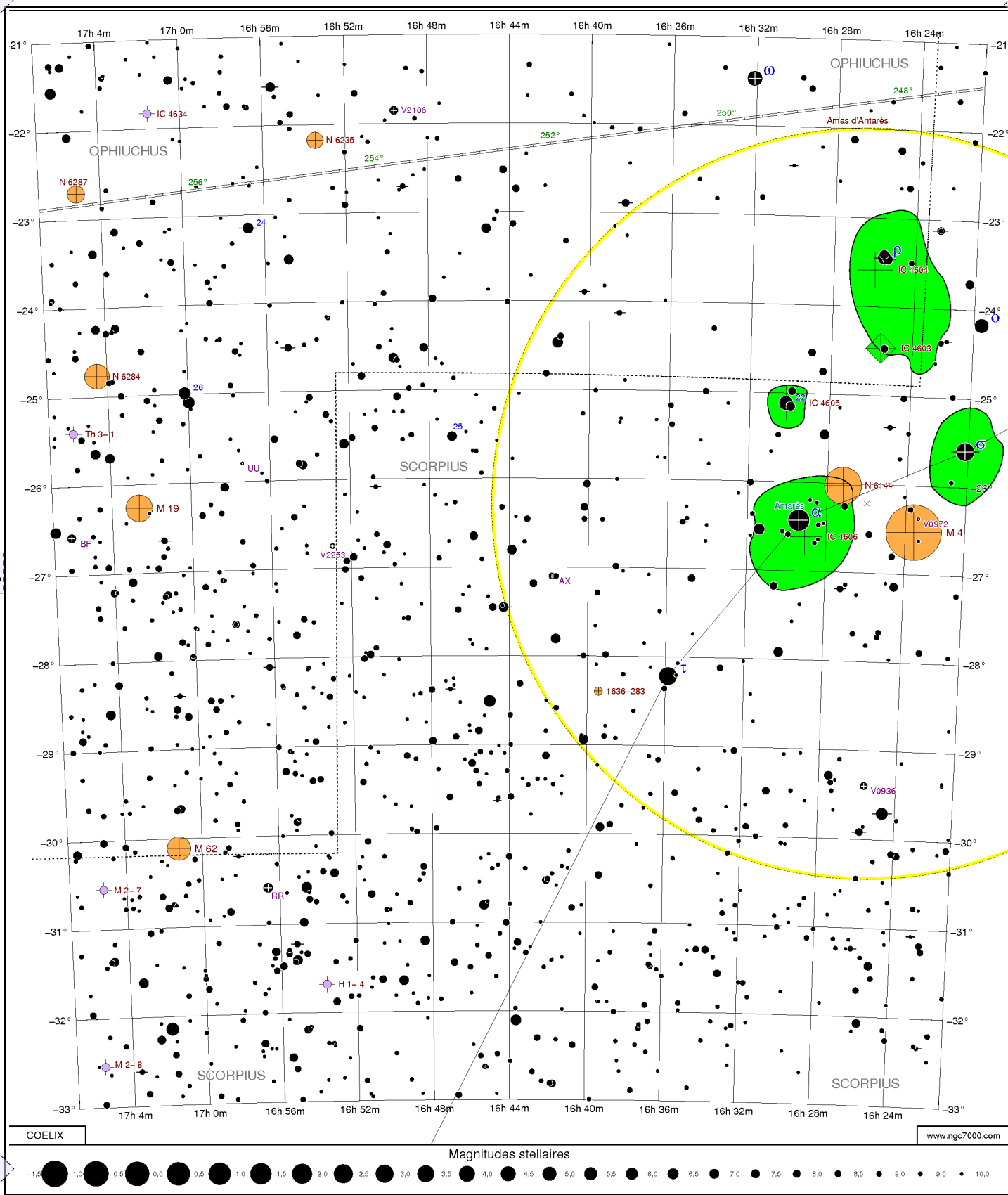


Epoque : 2000

10° x 12°

Ref : OPH4x11D-27A17h24

N° 12



Epoque : 2000

10° x 12°

Ref : OPH4x12D-27A16h44