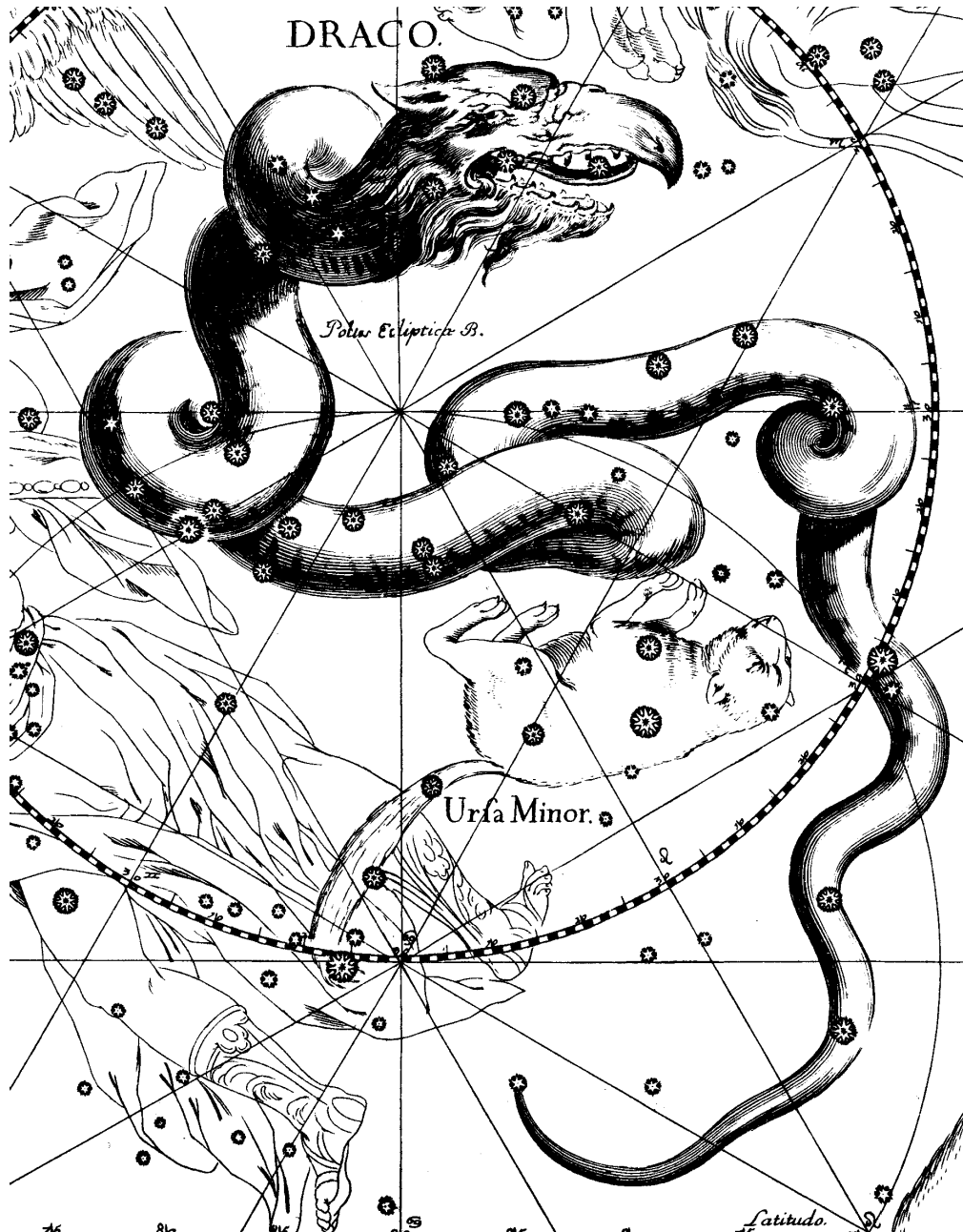


ATLAS PAR CONSTELLATIONS

DRACO DRAGON



Crédit

Cartographie

[Coelix Apex](#)

Mise en page

[OpenOffice 2.3](#)

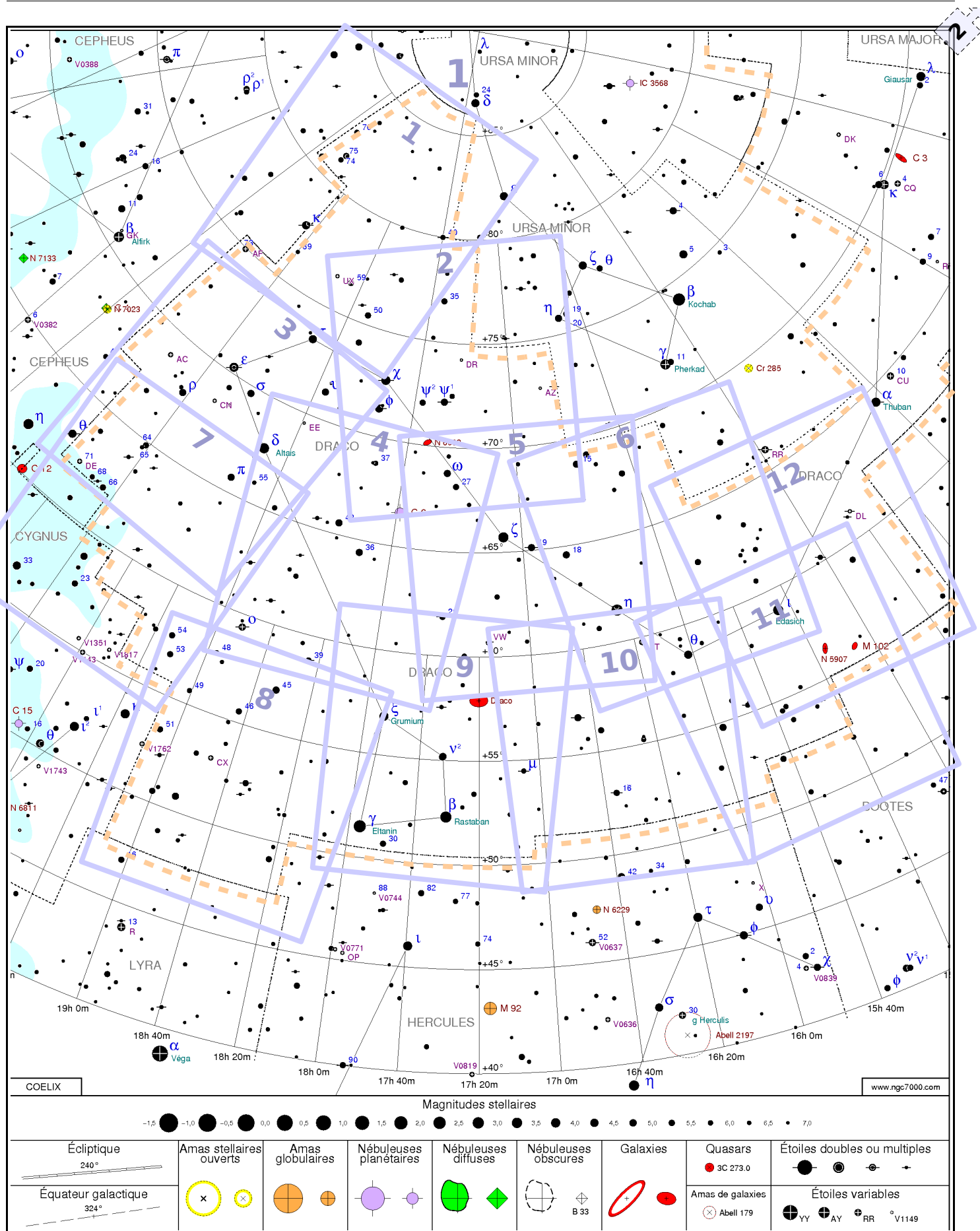
Illustration

[Uranographia](#) de Johannes Hevelius (Edition posthume 1690)

Auteur

Marceau GUIHARD (marceau.guihard at wanadoo.fr)

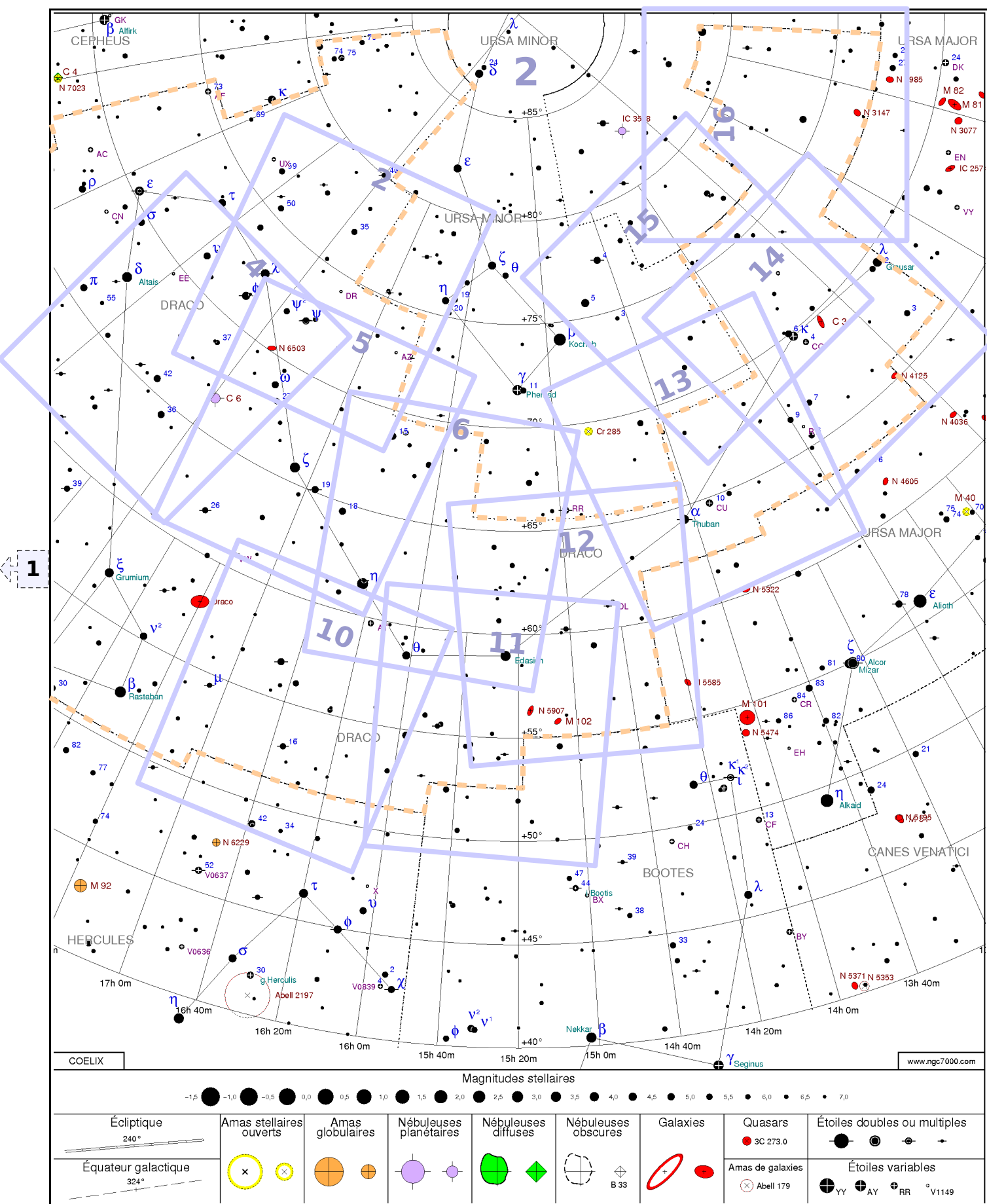
Version du 15/11/2007



Epoque : 2000

40° x 48°

Ref : DRA1x00D65A17H20

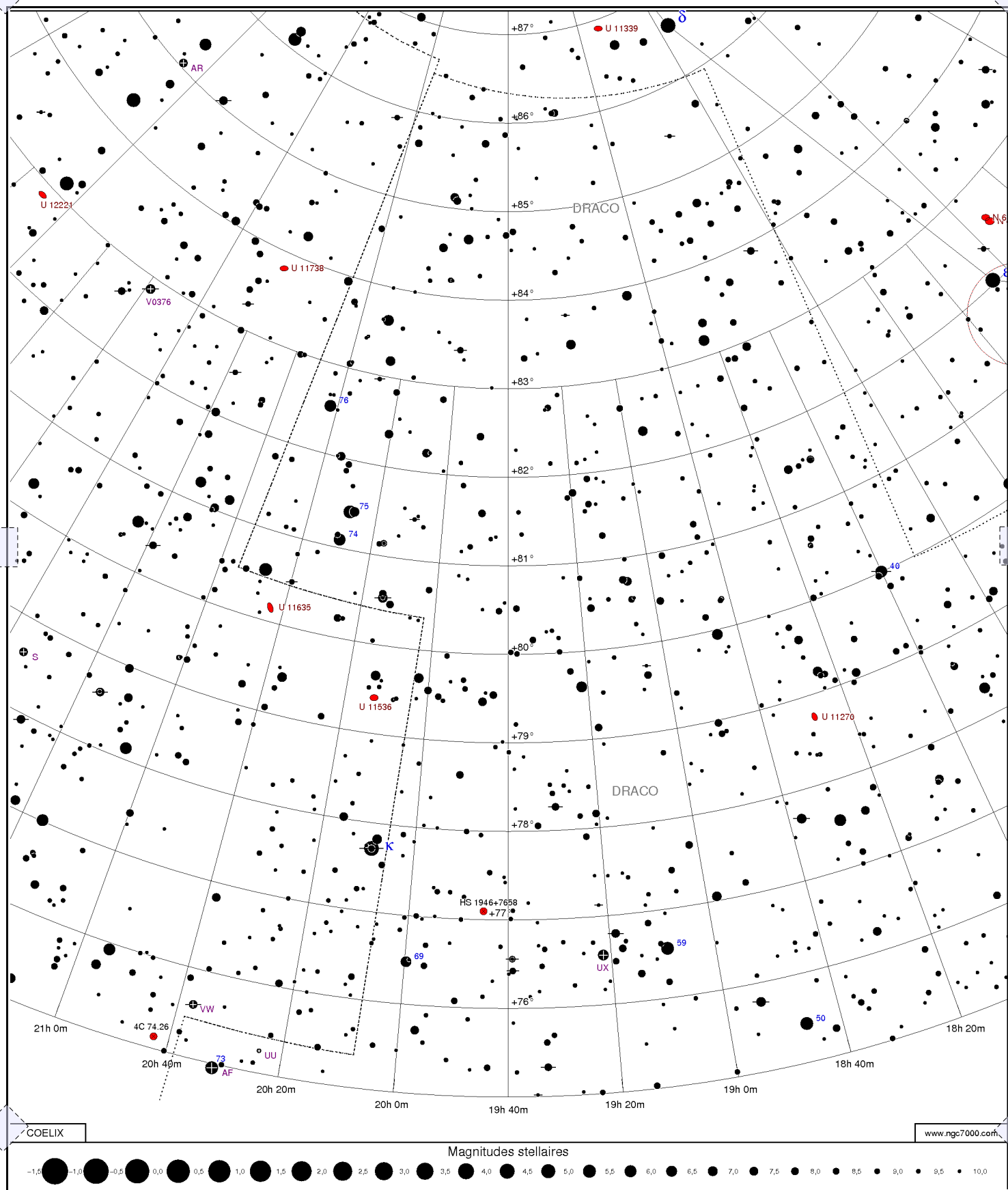


Epoque : 2000

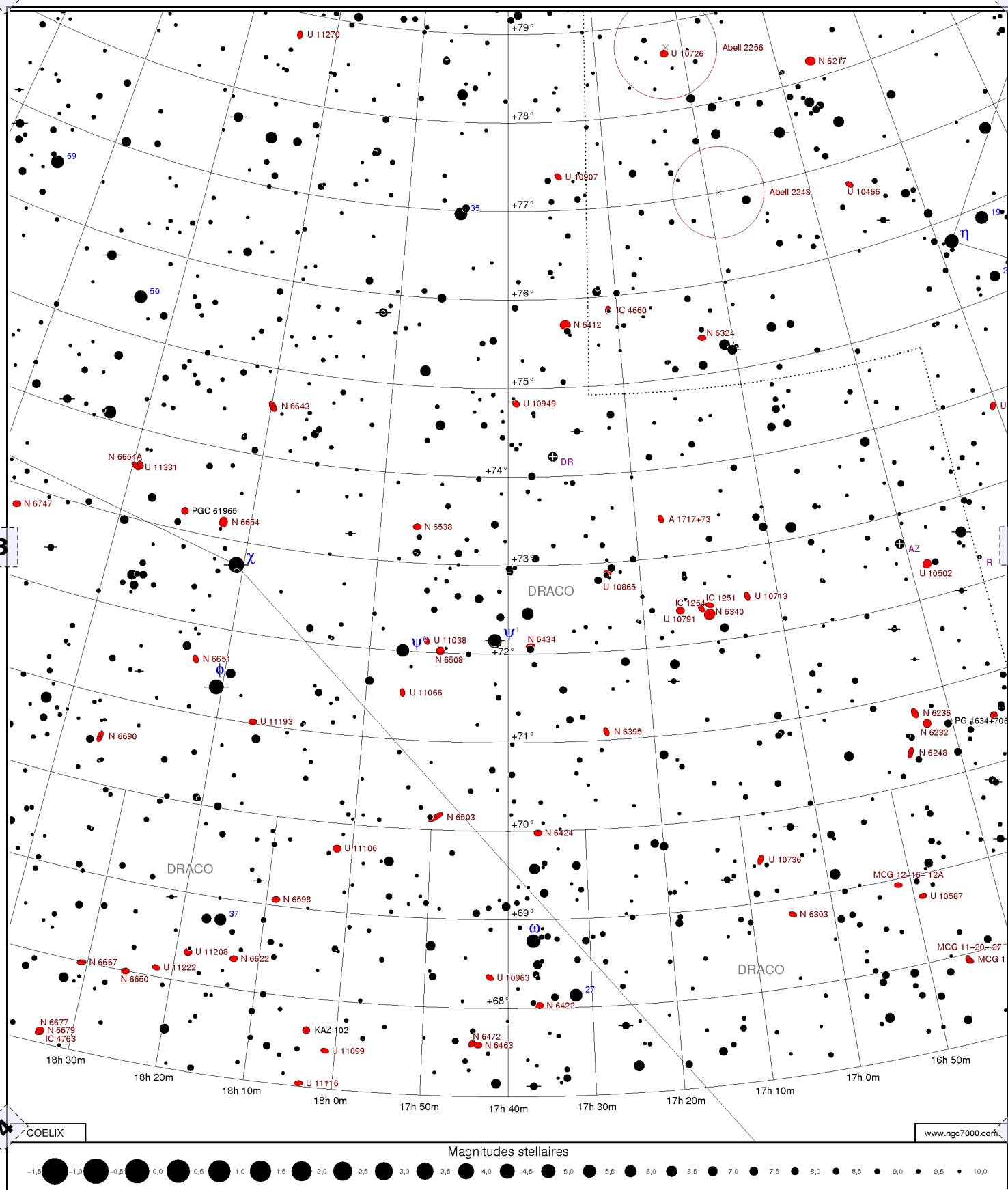
40° x 48°

Ref : DRA1x02D65A15H20

N° 1



N° 2

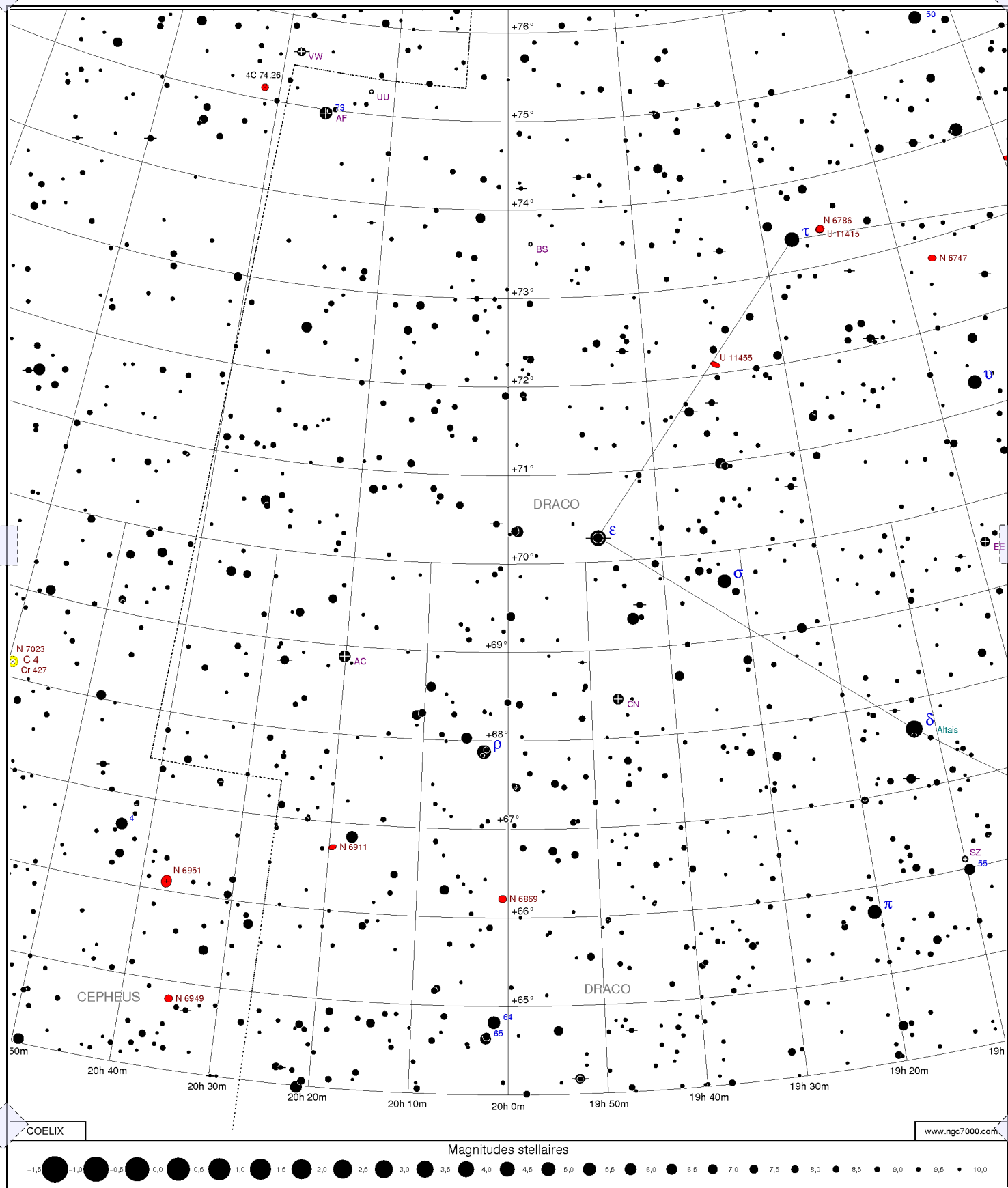


Epoque : 2000

10° x 12°

Ref : DRA4x02D73A17H40

N° 3



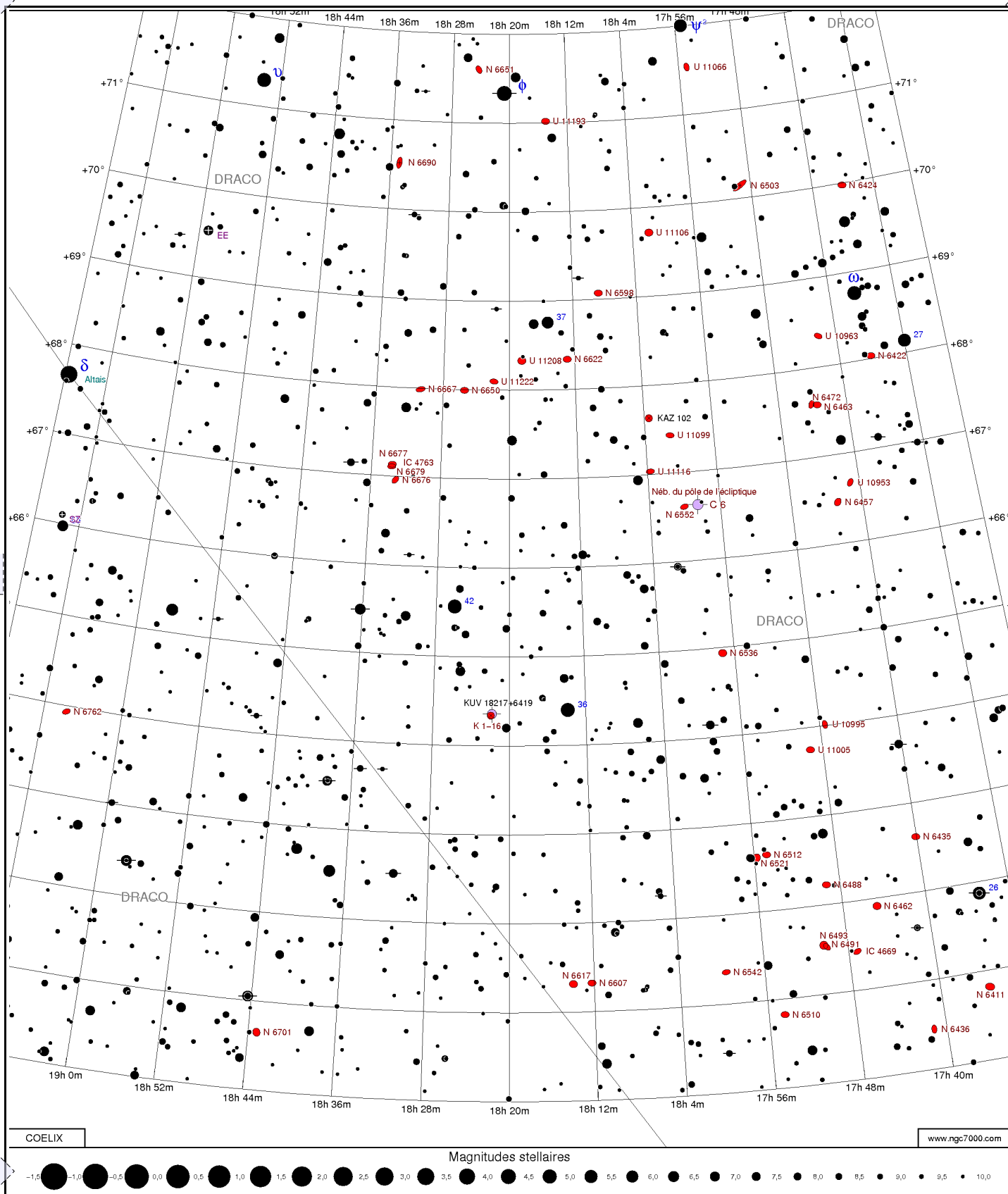
Epoque : 2000

10° x 12°

Ref : DRA4x03D70A20H00

7

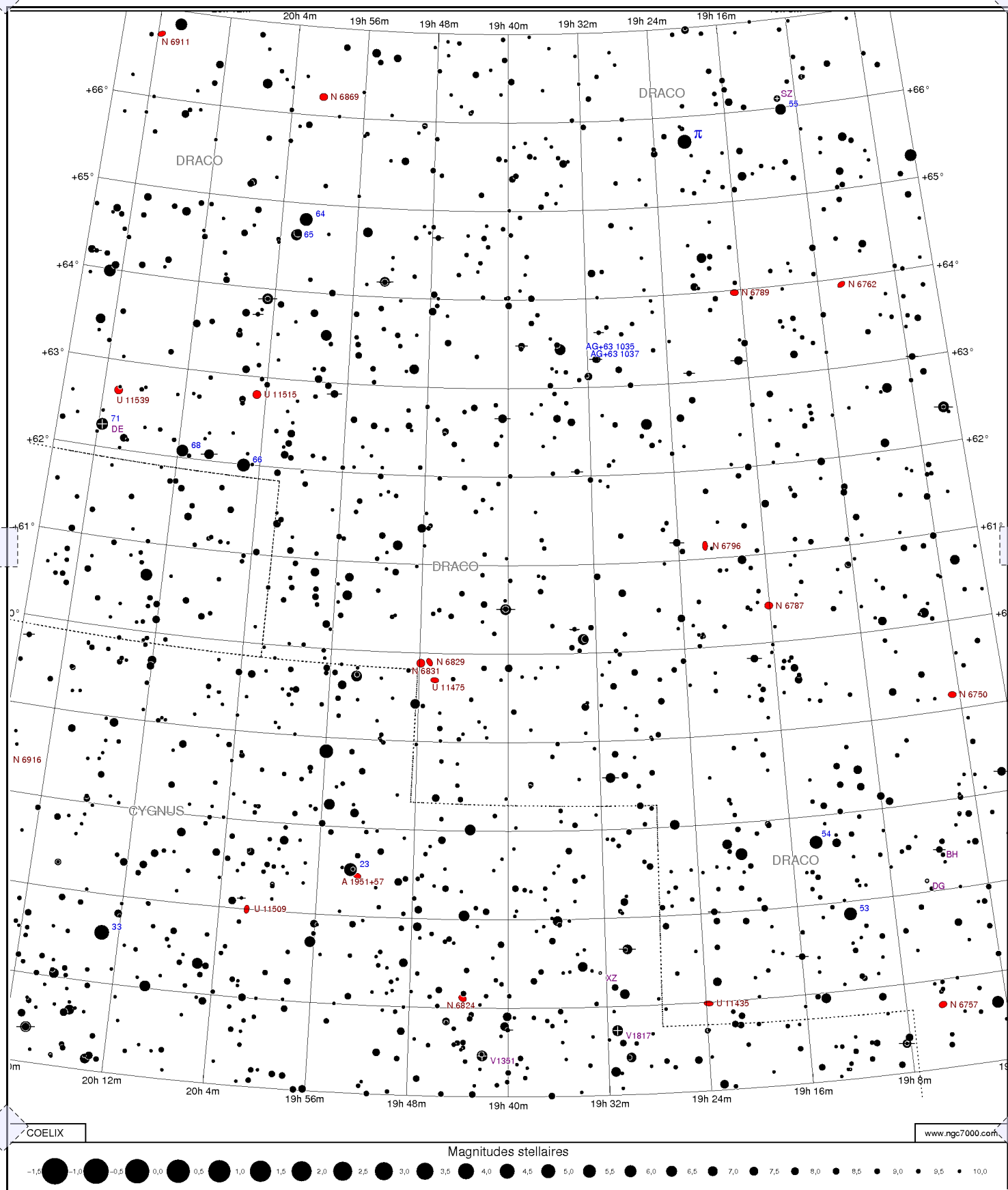
N° 4



Ref : DRA4x05D65A17H00

N° 7

4

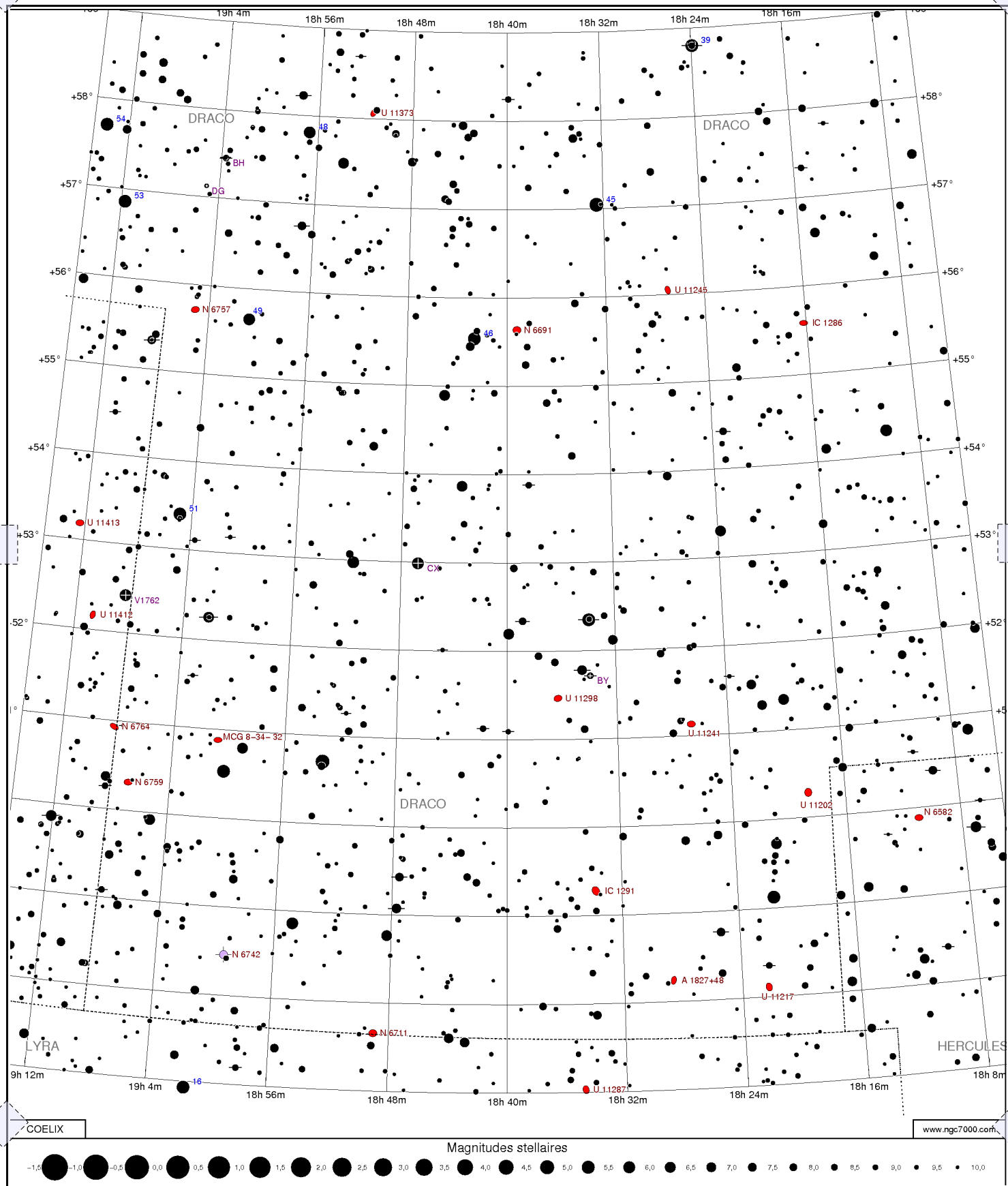


Epoque : 2000

10° x 12°

Ref : DRA4x07D61A19H40

N° 8

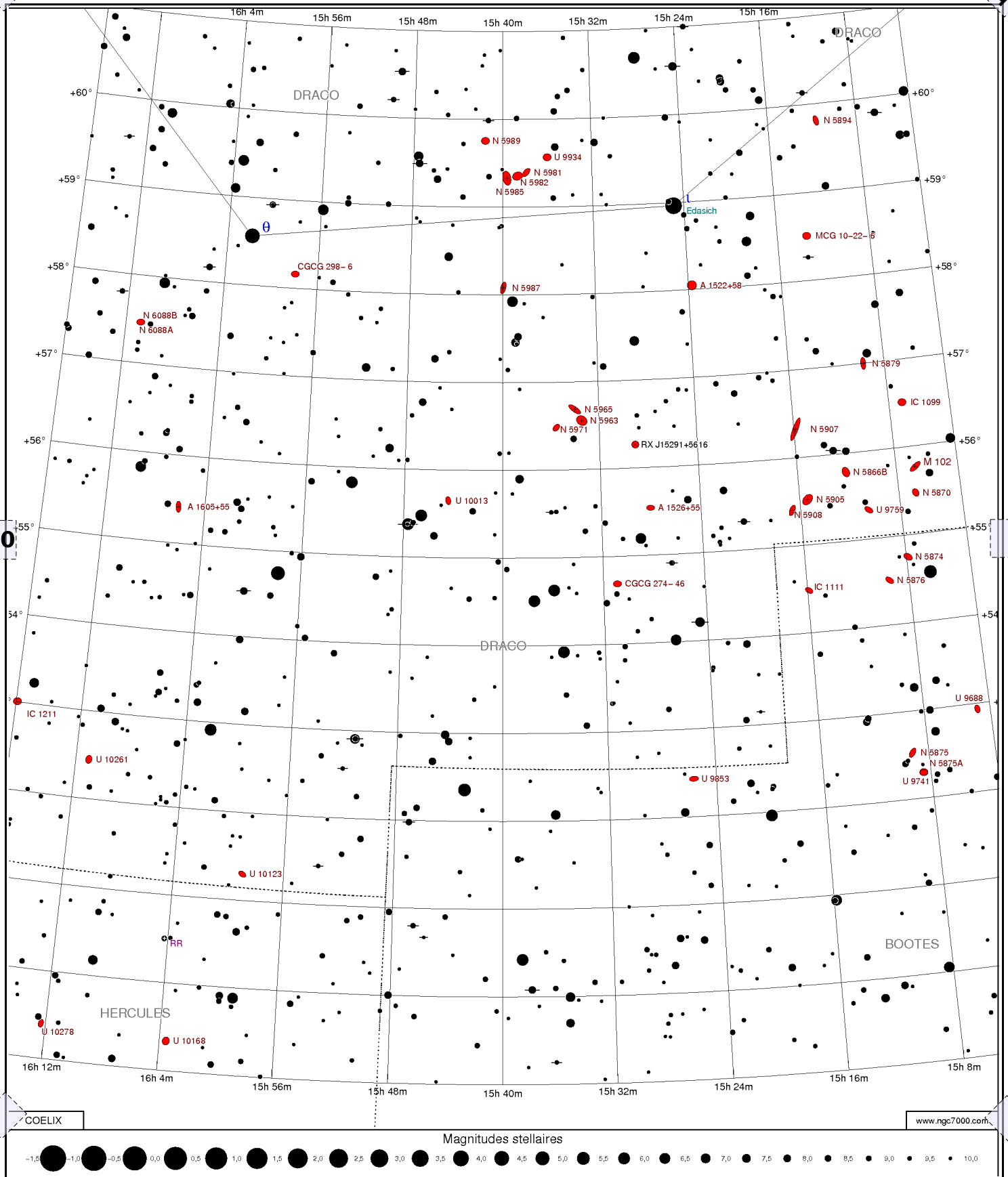


Epoque : 2000

10° x 12°

Ref : DRA4x08D53A18H40

N° 11

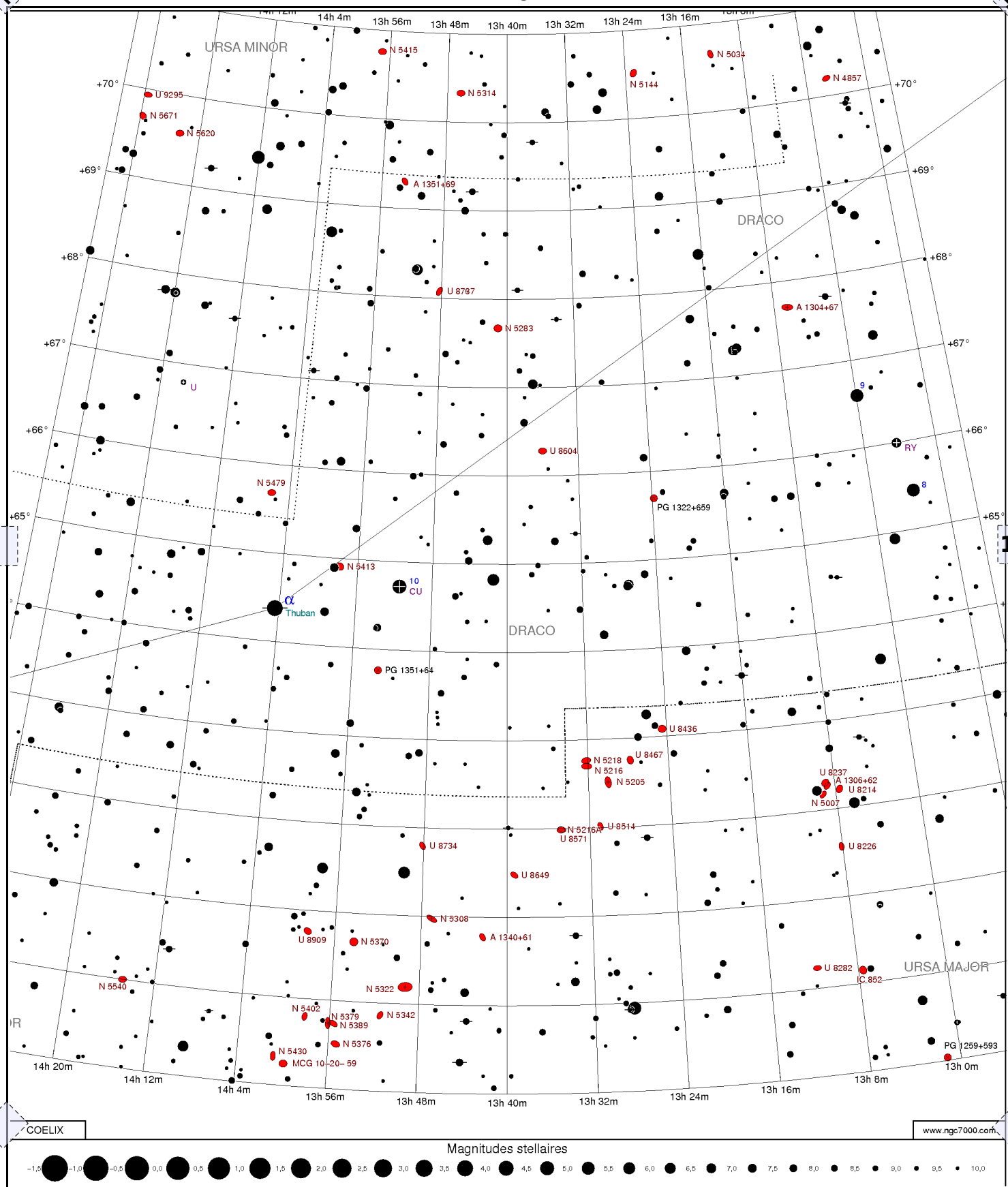


Epoque : 2000

10° x 12°

Ref : DRA4x11D55A15H40

N° 13



Epoque : 2000

10° x 12°

Ref : DRA4x13D65A13H40

www.nqc7000.com

Figure 10: A horizontal bar chart titled "Magnitude distribution" showing the distribution of magnitudes for the 100 brightest stars in the sky. The x-axis represents magnitude from -1.5 to 10.0, with major ticks every 0.5 units. The y-axis lists 100 stars, numbered 1 to 100. The bars show the magnitude of each star, with the first few stars (1-10) having magnitudes between -1.5 and 1.0, and the remaining stars (11-100) having magnitudes between 1.0 and 10.0. The distribution is highly skewed, with a large number of stars having magnitudes between 1.0 and 2.0.

Ref : DRA4x15D77A12H00


$$10^\circ \times 12^\circ$$

Ref : DRA4x16D78A10H20